



B. Updating the Bluetooth® Firmware Using a Windows 7 Computer with Built-in Bluetooth Connectivity

IMPORTANT

Please download and print these Bluetooth Firmware Update instructions before downloading and installing the firmware update. It is very important that you complete all steps correctly and the order described below. This firmware update can only be performed via a Bluetooth connection between the Pioneer receiver and a Bluetooth enabled computer.

In order to perform this update, the following items are needed:

- **Pioneer in-dash AVH-P8400BH multimedia receiver**
- **Computer with built-in Bluetooth connectivity**
- **[HW05-SW01.30.10](#) Bluetooth Firmware downloaded from www.pioneerelectronics.com**

PREPARING THE FIRMWARE UPDATE

Step 1

Locate and copy the [FC6000S_01-30-10_64_Bx_xxxSx_PIONEER_44100_SAFEUPDATE.plf](#) file that was previously downloaded in Step A onto the desktop of your Bluetooth-enabled computer.

PREPARING THE AVH-P8400BH FOR BLUETOOTH FIRMWARE UPDATE

Step 1

Before proceeding, disconnect any connected iPhone, iPod, OR USB device from the receiver. Turn the vehicle's key to the ON position and power up the AVH-P8400BH.

Step 2

Clear the Bluetooth memory.

- Press the home button and select 'OFF' from the source icons.
- Press the home button → Press the "System" icon at the bottom of the screen → Select the "Bluetooth Memory Clear" option → Press "Clear" → Press "OK"
- Press the home button and select the BT Audio Source. Confirm that the receiver display changes from "READY" to "NO SERVICE" before proceeding.



Step 3

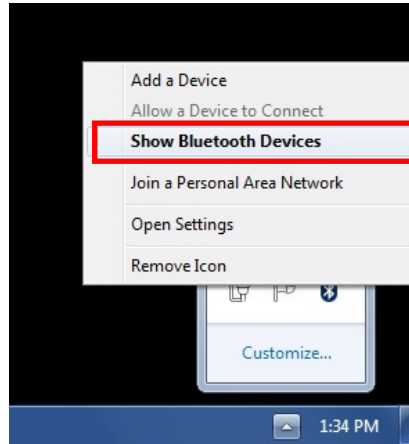
Access the Bluetooth connectivity feature of your Bluetooth-enabled laptop.

The Pioneer receiver must remain powered on in the vehicle and within Bluetooth range in order to establish a Bluetooth connection with the laptop.

Refer to your laptop's owner's manual for addition information on how to access Bluetooth features.

Note: The following steps shown were performed using a PC running Windows 7 with built-in Bluetooth connectivity.

- Click on the 'Show Hidden Icons' icon on the bottom right of the toolbar and click the 'Bluetooth Devices icon'.
- When the popup menu appears, select 'Show Bluetooth Devices'



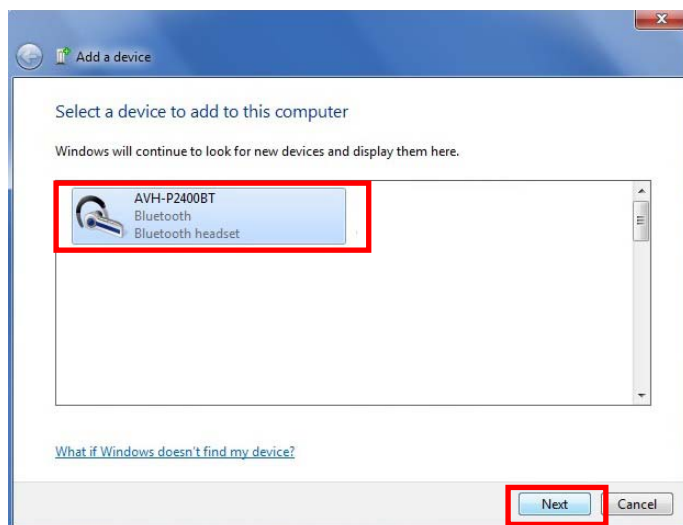
Step 4

Click 'Add a device' to find the AVH-P8400BH.



Step 5

Click on the desired Pioneer receiver and then click 'Next'





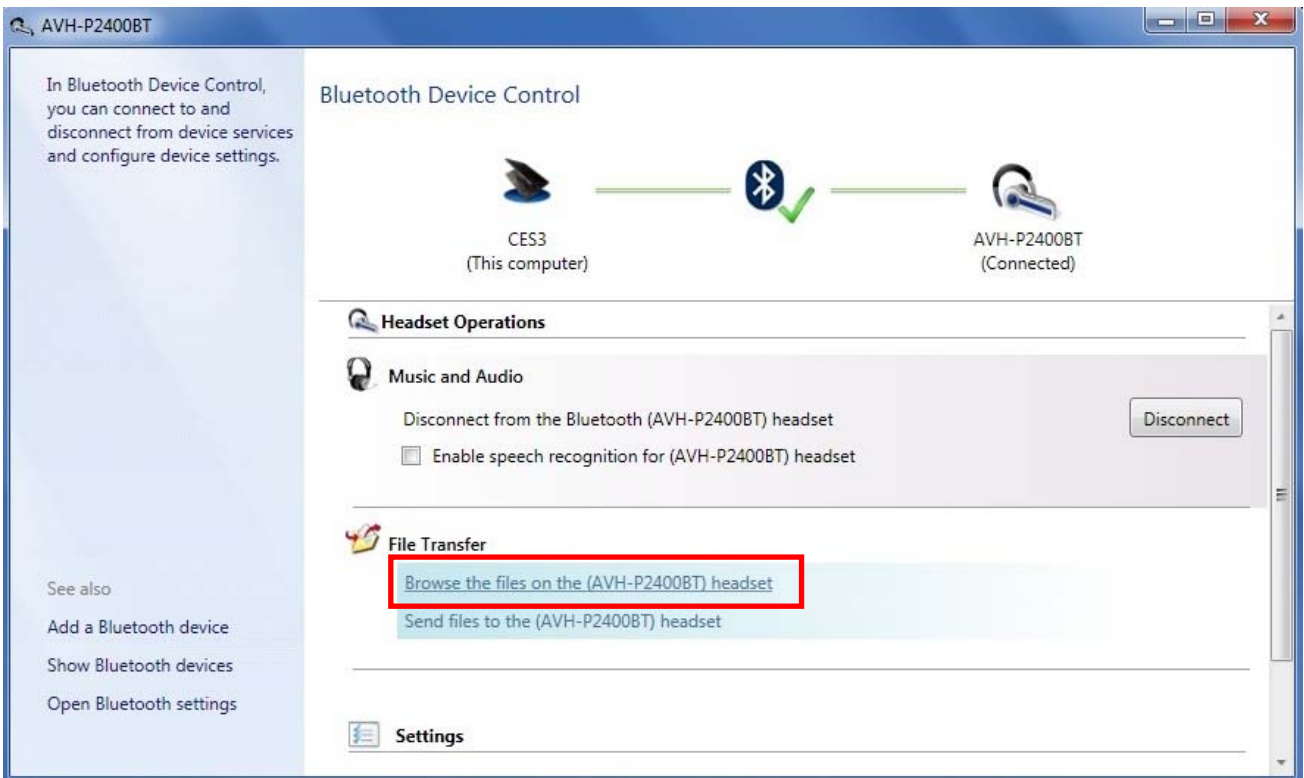
Step 6

The computer will attempt to pair via Bluetooth to the AVH-P8400BH and will ask for confirmation that the pairing code shown on the computer and on the Pioneer receiver match. Select 'Yes' and press 'Next' to proceed.



Step 7

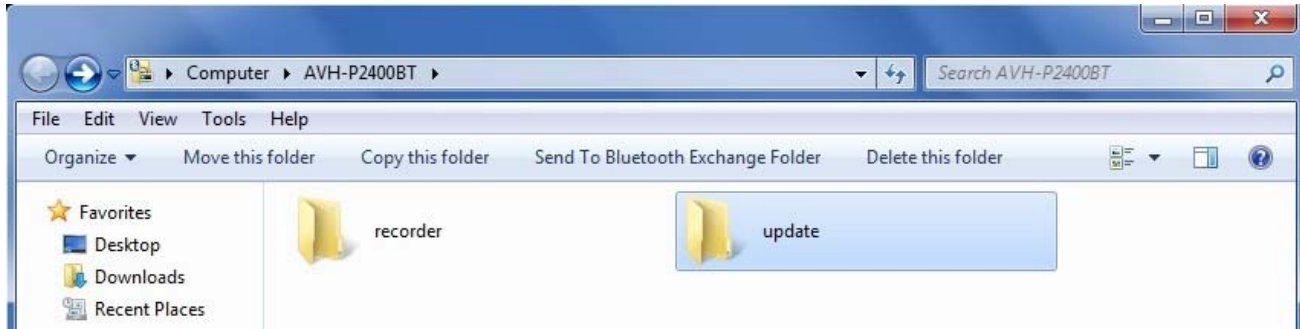
Once the computer has successfully paired via Bluetooth to the headunit, click on 'Browse the files on the (desired Pioneer receiver) headset'





Step 8

You should now be able to view the two folders on the Pioneer receiver: 'recorder' and 'update'.



INSTALLING THE BLUETOOTH FIRMWARE UPDATE

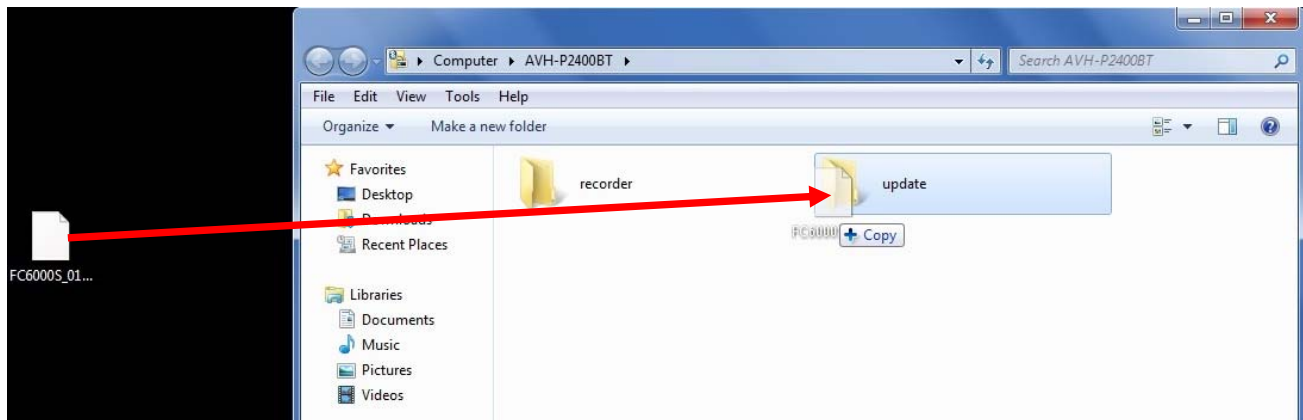
Step 1

Access the Bluetooth Software Update option on the AVH-P8400BH.

- Press the home button and select 'OFF' from the source icons.
- Press the home button → Press the "System" icon at the bottom of the screen → Select the "BT Software Update" option → Press "Start" → "Updating" will appear onscreen.

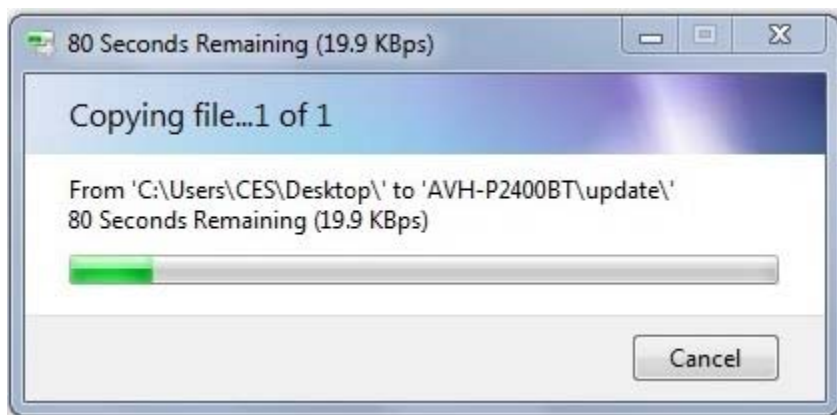
Step 2

Drag and drop the [FC6000S_01-30-10_64_Bx_xxxSx_PIONEER_44100_SAFEUPDATE.plf](#) Bluetooth firmware file from the Windows desktop to the "update" folder for the AVH-P8400BH



Step 3

During the file transfer, the following dialog box will appear on the laptop:





Step 4

Once the Bluetooth firmware update is completed, the touchscreen display of the AVH-P8400BH will display "Completed".



Step 5

Confirm the updated Bluetooth firmware version on the Pioneer receiver.

- Turn the vehicle's key to the OFF position, wait a moment, and then turn the vehicle's key back to the ON position.
- With the unit turned off (press the home button and select 'OFF' from the source icons), press the home button → Press the "System" icon at the bottom of the screen → Select the "Bluetooth Version Info" option → The firmware version should show **HW05-SW01.30.10**.

Step 6

The Bluetooth firmware update process is now complete. You can proceed with **Step C: Performing Part 1 of the (SYS) System Update**.

Pioneer Electronics (USA) Inc.

Customer Support Center

(800) 421-1404 M-F

10:30 AM- 7:00 PM Eastern Time, excluding holidays.

<http://www.pioneerelectronics.com>